

CURRENT TRANSFORMER

Model 19

Window Diameter 4.25"

Application:
Metering

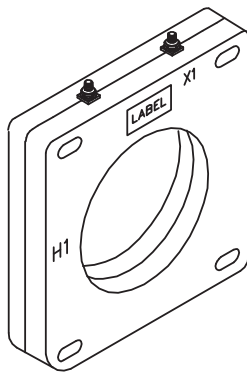
Frequency:
50 - 400 Hz

Insulation Level:
600 Volts, 10 kv BIL full wave

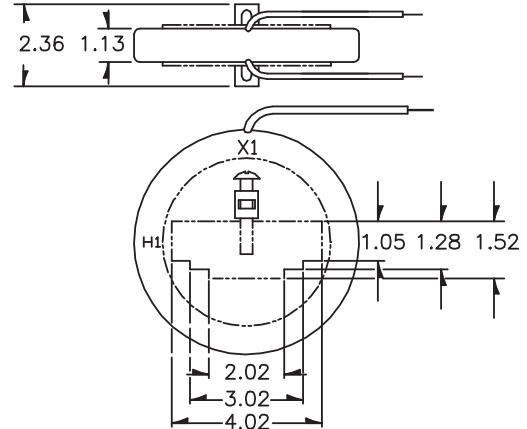
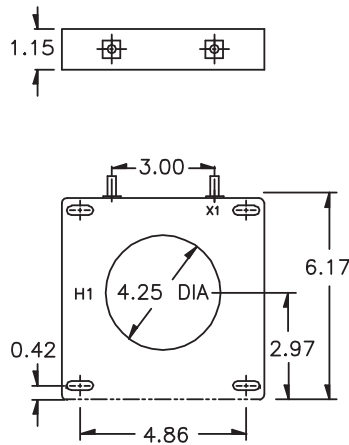


E228202

- SHT Terminals are brass studs No. 8 - 32 with one flatwasher, lockwasher and regular nut.
- Flexible leads are UL 1015, 105°C CSA approved, #16AWG, 24" long.
- Non-standard lead length can be specified.
- Order bus bar mounting kit 1021D00136 separately, factory installed.
- Approximate weight: 3 lbs.

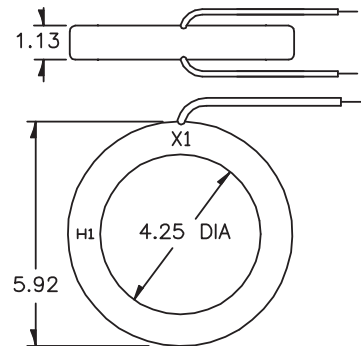
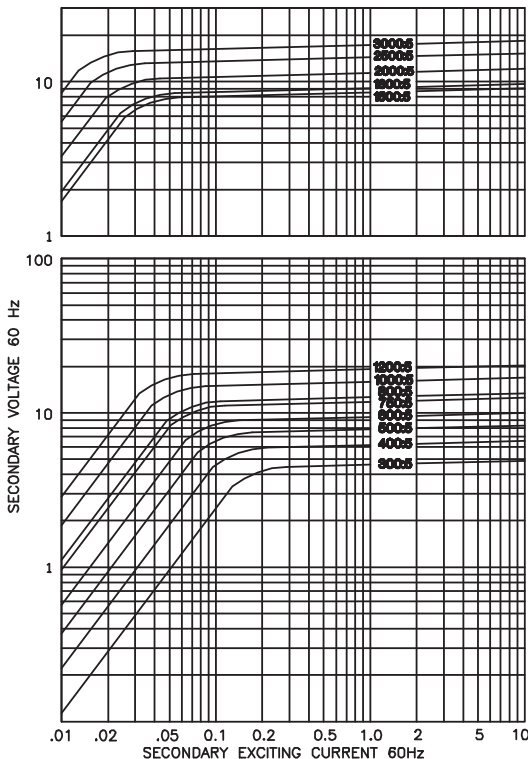


19 SHT



19 RL (BUS BAR MOUNTING KIT SHOWN)

EXCITATION CURVE



19 RL

CATALOG NUMBER	CURRENT RATIO	VA FOR ±1% CLASS	ANSI METERING CLASS AT 60 Hz					SECONDARY WINDING RESISTANCE (OHMS @ 75° C)	CONTINUOUS THERMAL RATING FACTOR	
			B0.1	B0.2	B0.5	B0.9	B1.8		@30°C	@55°C
19 ** -301	300:5	4.0	0.6	0.6	2.4	2.4	4.8	0.048	2.0	2.0
19 ** -401	400:5	10.0	0.3	0.3	1.2	2.4	2.4	0.064	2.0	2.0
19 ** -501	500:5	15.0	0.3	0.3	0.6	1.2	2.4	0.087	2.0	1.5
19 ** -601	600:5	15.0	0.3	0.3	0.6	1.2	1.2	0.116	2.0	1.5
19 ** -751	750:5	25.0	0.3	0.3	0.3	0.6	1.2	0.145	1.5	1.33
19 ** -801	800:5	30.0	0.3	0.3	0.3	0.6	1.2	0.155	1.5	1.33
19 ** -102	1000:5	30.0	0.3	0.3	0.3	0.6	1.2	0.242	1.33	1.0
19 ** -122	1200:5	40.0	0.3	0.3	0.3	0.3	0.6	0.291	1.33	1.0
19 ** -152	1500:5	15.0	0.3	0.3	0.6	0.6	0.6	0.200	1.5	1.0
19 ** -162	1600:5	15.0	0.3	0.3	0.3	0.6	0.6	0.213	1.5	1.0
19 ** -202	2000:5	20.0	0.3	0.3	0.3	0.3	0.6	0.266	1.33	1.0
19 ** -252	2500:5	20.0	0.3	0.3	0.3	0.3	0.3	0.333	1.0	0.8
19 ** -302	3000:5	25.0	0.3	0.3	0.3	0.3	0.3	0.399	1.0	0.8

** NOTE: When ordering, prefix catalog number with model designation required. i.e. 19RL-301, or 19SHT-301 etc.