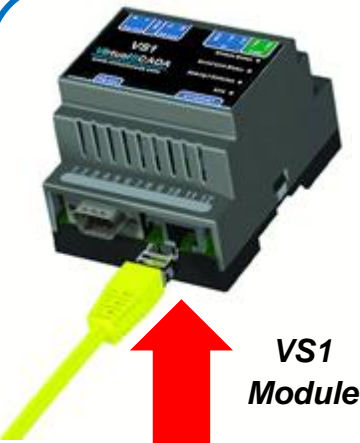


VirtualSCADA® VS1-MT Quick Setup

Web-based SCADA Gateway



VS1 Module

STEP 1

Connect Network Cable to Ethernet Port.

Connect Terminal 13 and 14 of the VirtualSCADA VS1 Module to the RS485/422 terminals of your device(s).


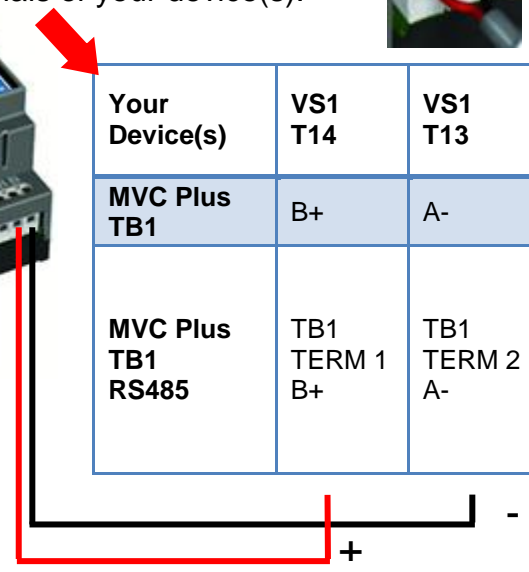
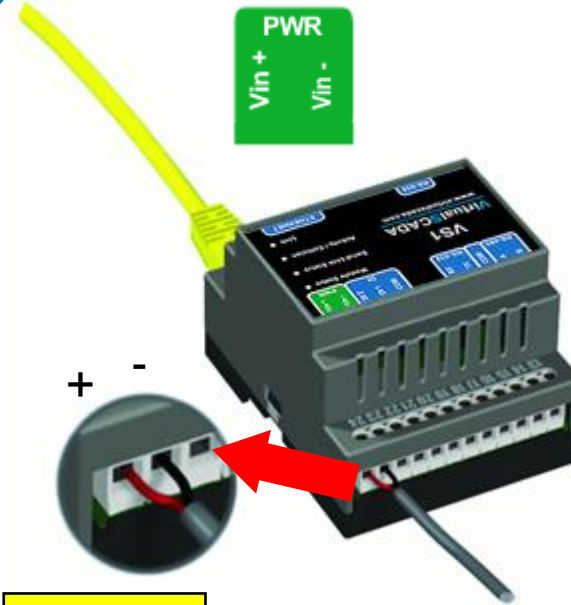
Terminal Numbers

Use twisted cable

STEP 2

Connect the VS1 gateway to your device(s).

| Your Device(s) | VS1 T14 | VS1 T13 |
|--------------------|---------------|---------------|
| MVC Plus TB1 | B+ | A- |
| MVC Plus TB1 RS485 | TB1 TERM 1 B+ | TB1 TERM 2 A- |

PWR

Vin +
Vin -

STEP 3

Connect Power Supply (9 - 28VAC/DC)


STEP 4

Connect Network Cable to Ethernet Port and power-up module.

Check Link LED:

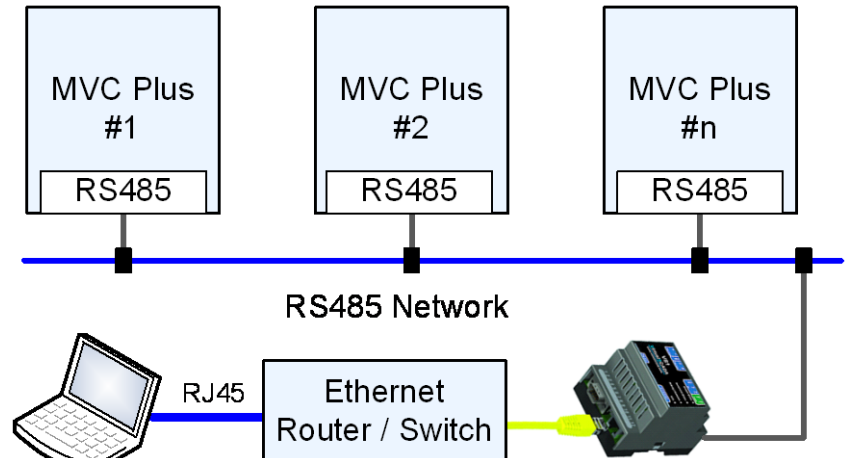
- 10Mbps (green)
- 100Mbps (orange)

Check network cable if LED does not light up!



USING VS1-MT WITH MULTIPLE MVC PLUS STARTERS

Note to use network configuration each MVC Plus has to be set to A unique modbus address on Setup Page 11.



Connect VS1-MT to router/switch

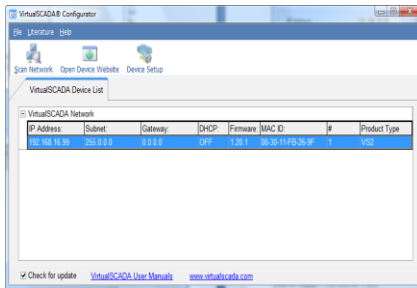
Step 5 to 7 VirtualSCADA® VS1-MT Quick Setup

Web-based SCADA Gateway

Note: The VirtualSCADA VS1 Module is default set up for a baud rate of 9600; to use the VS1 with the MVC Plus set baudrate to 19200 Baud, no parity and 2 stopbits. Next go to PAGE 11 of the MVC Plus and SET MODBUS BAUD to: 19.2kB and MODBUS ADDRESS to: 1

STEP 5

Run VirtualSCADA® Configurator Software



Install Program from CD or visit our website.

Default username and password for actual website is admin/admin

Setup

1. Double click on device entry to edit.
2. If you enable DHCP make sure a DHCP server is available on the network.
3. Default password to make changes is "admin".

Trouble Shooting

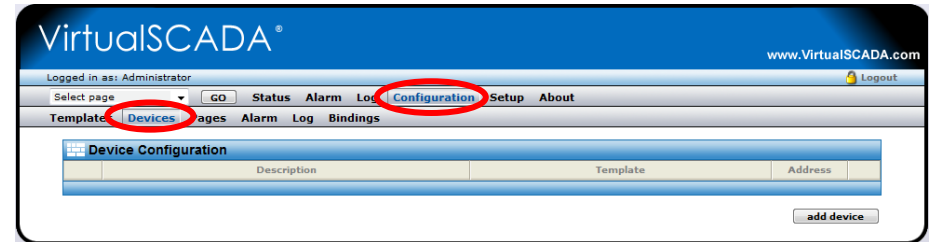
Make sure the IP address used is not used by any other device on the network.

If required make sure to set the correct Gateway and DNS settings.

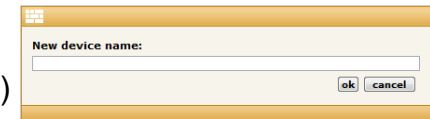
STEP 7

Add Device

First click on **Configuration** then click on **Devices**

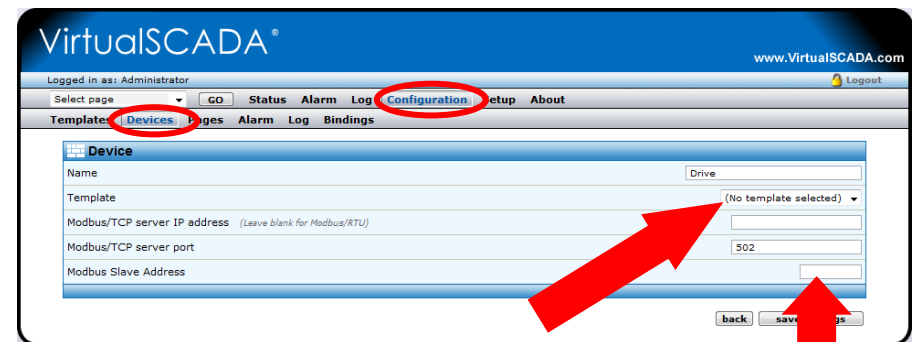
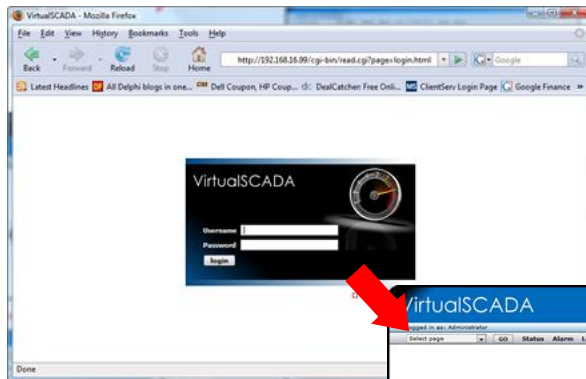


Click **Add Device** button to enter device name (e.g. Starter 1)



Highlight device entry in Step 5 and click open Device Website button to login into VirtualSCADA VS1

STEP 6



Next select correct drive template from list and set address

Click **save settings** button when done.

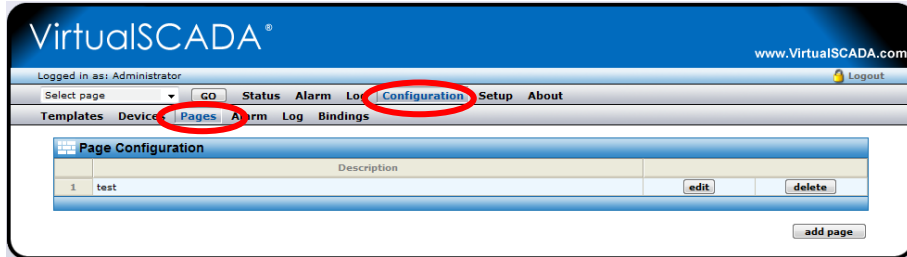
Step 8 to 10 VirtualSCADA® VS1-MT Quick Setup

Web-based SCADA Gateway

Note: The VirtualSCADA VS1 Module is default set up for a baud rate of 9600; to use the VS1 with the MVC Plus set baudrate to 19200 Baud, no parity and 2 stopbits. Next go to PAGE 11 of the MVC Plus and SET MODBUS BAUD to: 19.2kB and MODBUS ADDRESS to: 1

STEP 8 Create Custom Monitor Page

First click on **Configuration** then click on **Pages**

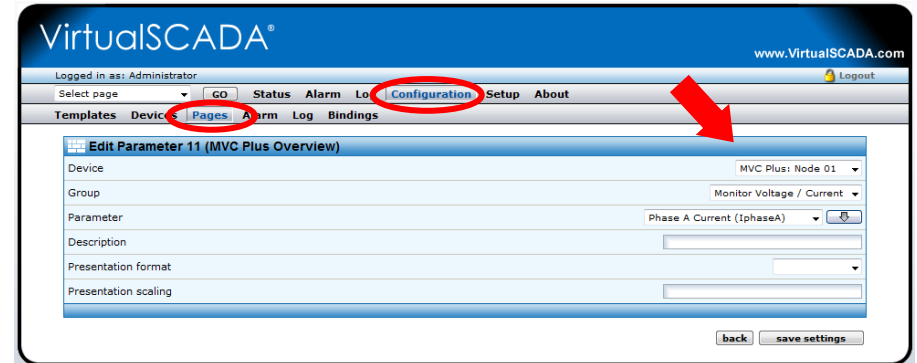


Click **Add Page** button to enter page name
(E.g. Overview Page)

New page name:

Step 9 Continued....

Select Device and Parameter then click **save settings** button



STEP 10 Select Page (e.g. Overview Page) from list



Refer to the VirtualSCADA VS1 User Manual for additional features and functions of the VS1 Module.

STEP 9 Click **Edit** button to add monitor to the page

