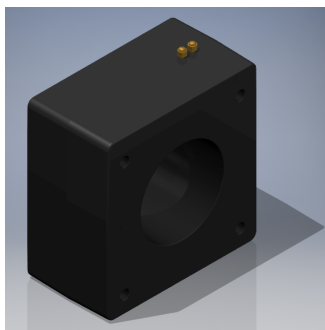




# Current Transformer

**Model 145**  
rev 011218

## CERTIFICATIONS:



**APPLICATION:**

Relaying and metering

**FREQUENCY:**

50-400 Hz.

**INSULATION LEVEL:**

600 Volts. 10 kV BIL. full wave

**WINDOW DIAMETER:**

6.00"

**APPROXIMATE WEIGHT:**

83 lbs.

**CONNECTIONS:**

- Terminals are brass screws No. 10-32 UNF with one flat washer and a split lock washer
- Multi-ratios available upon request
- Mounting Kit – 59-0215 (CR) and 59-0216 (CL)

<b>Model</b>	<b>145</b>
<b>Window Size</b>	6.00
<b>Width</b>	11.10
<b>Height</b>	11.47
<b>Depth</b>	6.00

**MODEL 145**  
**Window Diameter 6.00"**  
Approximate weight: 83 lbs.

CATALOG NUMBER	CURRENT RATIO	RELAY CLASS	ANSI METERING CLASS AT 60 HZ					SECONDARY WINDING RESISTANCE (OHMS @ 75°C)	CONTINUOUS THERMAL RATING FACTOR	
			B0.1	B0.2	B0.5	B0.9	B1.8		@ 30°C	@ 55°C
145 – 500	50:5	C20	1.2	4.8	-	-	-	0.030	2	2
145 – 750	75:5	C20	1.2	2.4	4.8	4.8	-	0.045	2	2
145 – 101	100:5	C20	0.6	1.2	2.4	4.8	4.8	0.061	2	2
145 – 151	150:5	C50	0.6	0.6	1.2	2.4	2.4	0.091	2	2
145 – 201	200:5	C100	0.3	0.6	0.6	1.2	2.4	0.121	2	2
145 – 251	250:5	C100	0.3	0.3	0.6	0.6	1.2	0.152	2	2
145 – 301	300:5	C100	0.3	0.3	0.3	0.6	1.2	0.288	2	2
145 – 401	400:5	C200	0.3	0.3	0.3	0.3	0.6	0.384	2	2
145 – 501	500:5	C200	0.3	0.3	0.3	0.3	0.3	0.480	2	1.5
145 – 601	600:5	C200	0.3	0.3	0.3	0.3	0.3	0.576	2	1.5
145 – 751	750:5	C400	0.3	0.3	0.3	0.3	0.3	0.720	2	1.5
145 – 801	800:5	C400	0.3	0.3	0.3	0.3	0.3	0.768	2	1.5
145 – 102	1000:5	C400	0.3	0.3	0.3	0.3	0.3	0.960	1.5	1.33
145 – 122	1200:5	C400	0.3	0.3	0.3	0.3	0.3	1.153	1.5	1
145 – 152	1500:5	C800	0.3	0.3	0.3	0.3	0.3	1.441	1.5	1
145 – 162	1600:5	C800	0.3	0.3	0.3	0.3	0.3	1.537	1.33	1
145 – 202	2000:5	C800	0.3	0.3	0.3	0.3	0.3	1.829	1	1
145 – 252	2500:5	C800	0.3	0.3	0.3	0.3	0.3	2.286	1	0.8
145 – 302	3000:5	C800	0.3	0.3	0.3	0.3	0.3	2.743	1	0.8
145 – 322	3200:5	C800	0.3	0.3	0.3	0.3	0.3	2.926	1	0.8
145 – 352	3500:5	C800	0.3	0.3	0.3	0.3	0.3	3.040	1	0.8
145 – 402	4000:5	C800	0.3	0.3	0.3	0.3	0.3	3.474	1	0.6
145 – 502	5000:5	C800	0.3	0.3	0.3	0.3	0.3	4.342	0.8	0.6
145 – 602	6000:5	C800	0.3	0.3	0.3	0.3	0.3	5.211	0.8	0.6

Products are manufactured in a plant whose quality management system is certified / registered as being in conformity with ISO 9001



**TTL** Transformer Technologies Ltd.



# Current Transformer

**Model 145**

rev 101916

## EXCITATION CURVE

