



Current Transformer

Model 56

APPLICATION:

With ammeters, wattmeters and cross current compensation

FREQUENCY:

50-400 Hz.

INSULATION LEVEL:

600 Volts. 10 kV BIL. full wave

WINDOW DIAMETER:

2.06"

APPROXIMATE WEIGHT:

0.6 lbs.

CONNECTIONS:

-Flexible Leads are UL 1015 105°C, CSA approved #16AWG, 24" long

-Non-standard length to be specified

-Terminals are brass studs No. 8-32 UNC with one flat washer, lock washer, and regular nut

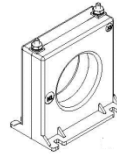
-RBT and RT case styles also available and SHT and SFT as SHL and SFL with leads



56RL



56SHT



56SFT

| Model | 56SHT | 56SFT | 56RL |
|-------------|-------|-------|------|
| Window Size | 2.06 | 2.06 | 2.06 |
| Width | 3.50 | 3.50 | 3.50 |
| Height | 3.63 | 3.63 | 3.50 |
| Depth | 1.10 | 1.10 | 1.09 |

CERTIFICATIONS:



E228202



223647



ISO 9001 Registered

Quality Management

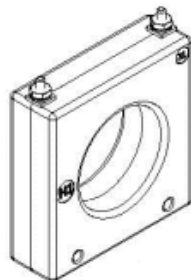
MODEL 56

Window Diameter 2.06"

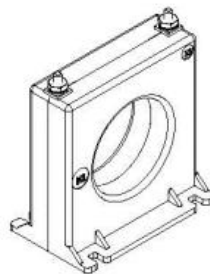
Approximate weight: 0.6 lbs.

| CATALOG NUMBER | CURRENT RATIO | ACCURACY AT 60 HZ | BURDEN VA AT 60 HZ |
|----------------|---------------|-------------------|--------------------|
| 56**-500 | 50:5 | ± 3% | 0.5 |
| 56**-750 | 75:5 | ± 1% | 0.5 |
| 56**-101 | 100:5 | ± 1% | 1 |
| 56**-151 | 150:5 | ± 1% | 2.5 |
| 56**-201 | 200:5 | + 1% | 4 |
| 56**-251 | 250:5 | + 1% | 6 |
| 56**-301 | 300:5 | + 1% | 7.5 |
| 56**-401 | 400:5 | + 1% | 10 |
| 56**-501 | 500:5 | + 1% | 12.5 |
| 56**-601 | 600:5 | + 1% | 15 |
| 56**-751 | 750:5 | + 1% | 7 |
| 56**-801 | 800:5 | + 1% | 8 |
| 56**-102 | 1000:5 | + 1% | 10 |
| 56**-122 | 1200:5 | + 1% | 12.5 |

NOTE: WHEN ORDERING, PREFIX CAT NO. WITH MODEL DESIGNATION REQUIRED, I.E. 56SFT-500, 56RL-500, ETC.



56SHT



56SFT

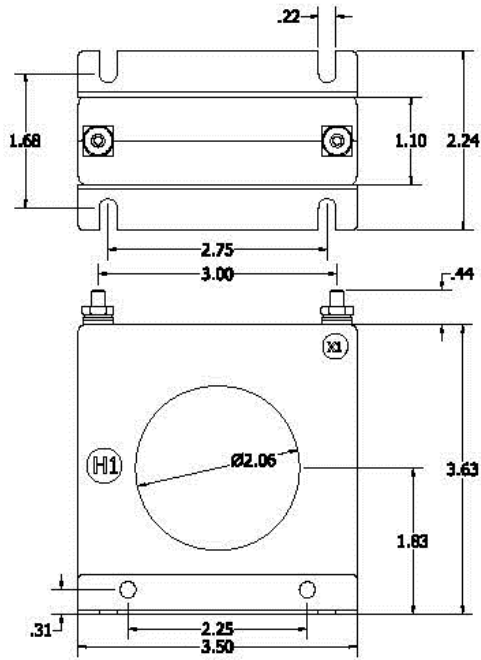


56RL

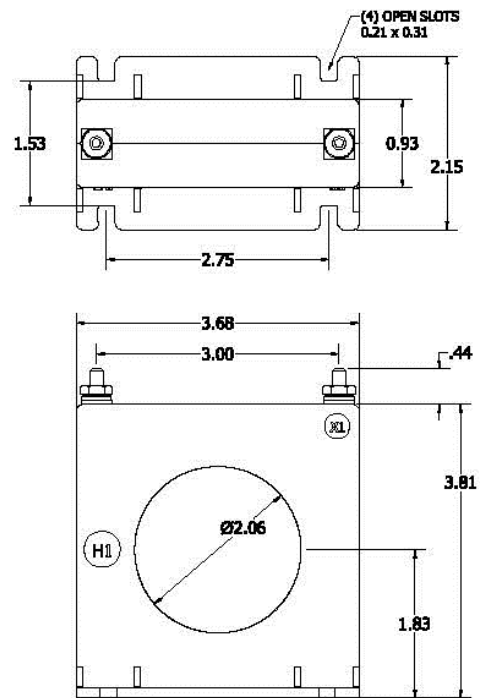
Products are manufactured in a plant whose quality management system is certified / registered as being in conformity with ISO 9001



56SHT



56SFT



56RL

