

APPLICATION:

To provide power in Motor Control centers and Distribution Switchgear

FREQUENCY:

50/60 Hz.

INSULATION LEVEL:

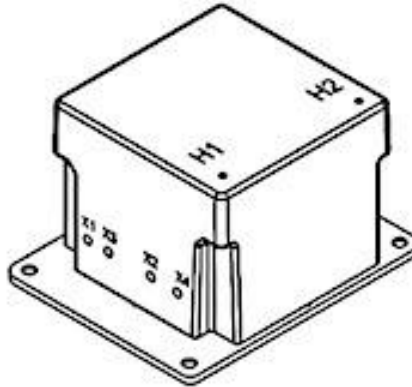
6.9 kV, 60 kV BIL. full wave

THERMAL RATING:

At 30°C. amb.

APPROXIMATE WEIGHT:

25 lbs.



CERTIFICATIONS:



| CATALOG NUMBER | PRIMARY VOLTAGE | RATIO AT 110 V | SECONDARY VOLTAGE | FREQUENCY Hz | THERMAL RATING |
|---------------------|-----------------|----------------|-------------------|--------------|----------------|
| CPT3 60 05 2400 - 5 | 2400 | 21.81 | 110/220 | 50/60 | 0.5 kVA |
| CPT3 60 05 3300 - 5 | 3300 | 30.00 | 110/220 | 50/60 | 0.5 kVA |
| CPT3 60 05 4160 - 5 | 4160 | 37.81 | 110/220 | 50/60 | 0.5 kVA |
| CPT3 60 05 4800 - 5 | 4800 | 43.63 | 110/220 | 50/60 | 0.5 kVA |
| CPT3 60 05 5000 - 5 | 5000 | 45.45 | 110/220 | 50/60 | 0.5 kVA |
| CPT3 60 05 5500 - 5 | 5500 | 50.00 | 110/220 | 50/60 | 0.5 kVA |
| CPT3 60 05 6000 - 5 | 6000 | 54.54 | 110/220 | 50/60 | 0.5 kVA |
| CPT3 60 05 6600 - 5 | 6600 | 60.00 | 110/220 | 50/60 | 0.5 kVA |
| CPT3 60 05 6900 - 5 | 6900 | 62.72 | 110/220 | 50/60 | 0.5 kVA |

- Primary and secondary terminal are brass screws No. 10-32 with one flat washer and lockwasher.
- Transformer winding is vacuum encapsulated in polyurethane resin with temperature insulation class of 105°C
- Plated steel mounting base
- For indoor use

