



**Current Transformer
Technologies LTD**

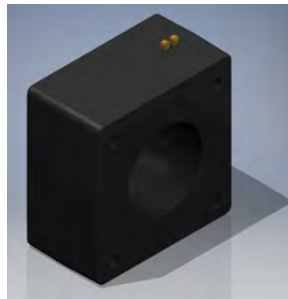


Current Transformer

Model 141

rev 12162025

CERTIFICATIONS:



APPLICATION:

Relaying and metering.

FREQUENCY:

50-400 Hz.

INSULATION LEVEL:

600 Volts 10 kV BIL full wave

WINDOW DIAMETER:

8.13"

APPROXIMATE WEIGHT:

44 lbs.

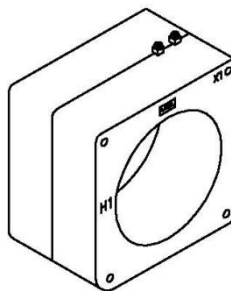
CONNECTIONS:

Terminals are brass screws No. 10-32 UNF
with one flat washer and a split lock washer
-Mounting Kit - #145-KIT

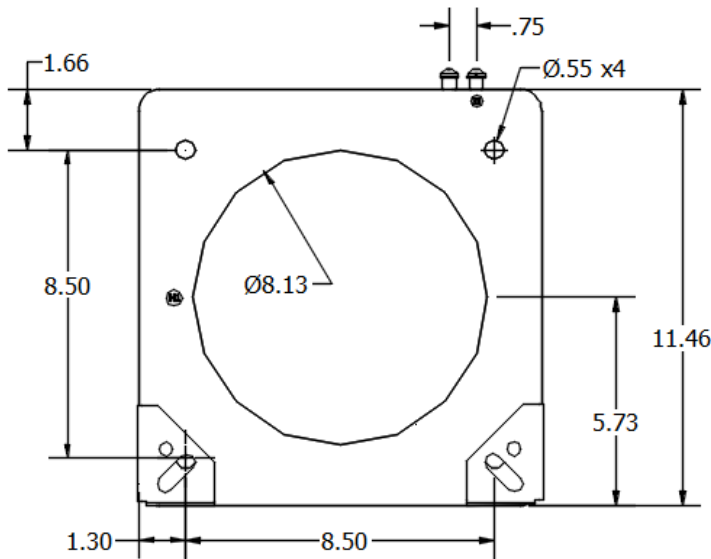
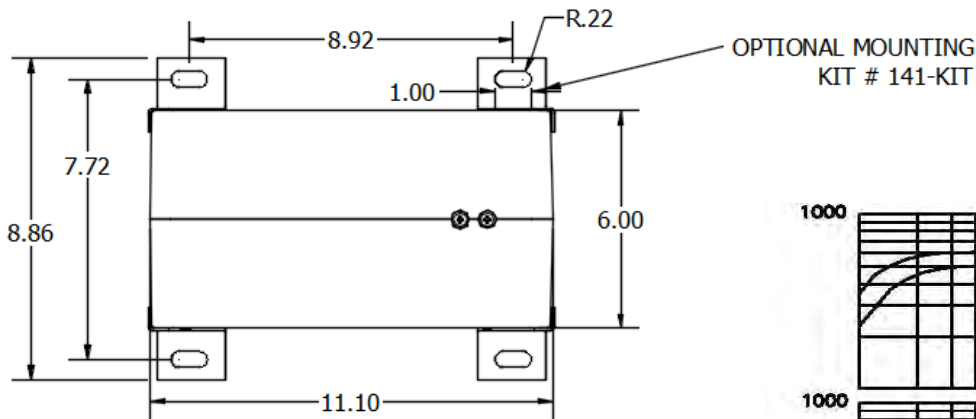
Model	141
Window Size	8.13
Width	11.10
Height	11.47
Depth	6.00

MODEL 141
Window Diameter 8.13"
Approximate weight: 44 lbs.

CATALOG NUMBER	CURRENT RATIO	RELAY CLASS	ANSI METERING CLASS AT 60 HZ					SECONDARY WINDING RESISTANCE (OHMS @ 75°C)	CONTINUOUS THERMAL RATING FACTOR	
			B0.1	B0.2	B0.5	B0.9	B1.8		@ 30°C	@ 55°C
141 - 500	50:5	C10	4.8	-	-	-	-	0.033	2	2
141 - 101	100:5	C10	2.4	2.4	-	-	-	0.066	2	2
141 - 201	200:5	C20	0.6	1.2	1.2	2.4	4.8	0.117	2	2
141 - 301	300:5	C50	0.6	0.6	1.2	1.2	2.4	0.248	2	2
141 - 401	400:5	C50	0.3	0.3	0.6	0.6	1.2	0.277	2	2
141 - 501	500:5	C100	0.3	0.3	0.3	0.6	0.6	0.415	2	2
141 - 601	600:5	C100	0.3	0.3	0.3	0.3	0.6	0.498	2	1.5
141 - 801	800:5	C100	0.3	0.3	0.3	0.3	0.3	0.664	2	1.5
141 - 102	1000:5	C200	0.3	0.3	0.3	0.3	0.3	0.829	2	1.5
141 - 122	1200:5	C200	0.3	0.3	0.3	0.3	0.3	1.009	2	1.5
141 - 152	1500:5	C400	0.3	0.3	0.3	0.3	0.3	1.253	2	1.5
141 - 202	2000:5	C400	0.3	0.3	0.3	0.3	0.3	1.659	1.33	1
141 - 252	2500:5	C400	0.3	0.3	0.3	0.3	0.3	0.963	1.5	1.33
141 - 302	3000:5	C400	0.3	0.3	0.3	0.3	0.3	2.356	1.5	1
141 - 402	4000:5	C400	0.3	0.3	0.3	0.3	0.3	3.141	1	0.8
141 - 502	5000:5	C200	0.3	0.3	0.3	0.3	0.3	2.862	1	0.8
141 - 602	6000:5	C400	0.3	0.3	0.3	0.3	0.3	4.302	1	0.8



Products are manufactured in a plant whose quality management system has been certified to be in compliance with ISO 9001:2015 by NQA



EXCITATION CURVE

