



**Current Transformer  
Technologies LTD**



# Current Transformer

**Model 296-300**

rev 12162025

## CERTIFICATIONS:



223647



### APPLICATION:

Metering

### FREQUENCY:

50-400 Hz.

### INSULATION LEVEL:

600 Volts. 10 kV BIL. full wave

### WINDOW DIAMETER:

1.50", 2.25", 3.0", 3.38", 3.75"

### APPROXIMATE WEIGHT:

18, 15, 12, 10, 5 lbs.

### CONNECTIONS:

-Terminals are brass studs No. 8-32

UNC with one flat washer,

lockwasher, and regular nut

-Multi-ratios available upon request

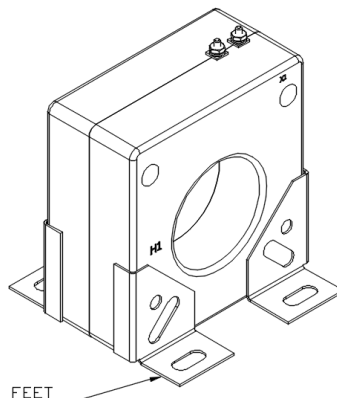
-Order Mounting bracket kit separately

#110--KIT

Model	296	297	298	299	300
Window Size	1.50	2.25	3.00	3.38	3.75
Width	5.96	5.96	5.96	5.96	5.96
Height	6.31	6.31	6.31	6.31	6.31
Depth	3.00	3.00	3.00	3.00	3.00

**MODEL 296**  
Window Diameter 1.50"  
Approximate weight: 18 lbs.

CATALOG NUMBER	CURRENT RATIO	RELAY CLASS	ANSI METERING CLASS AT 60 HZ					SECONDARY WINDING RESISTANCE (OHMS @ 75°C)	CONTINUOUS THERMAL RATING FACTOR	
			B0.1	B0.2	B0.5	B0.9	B1.8		@ 30°C	@ 55°C
296 - 500	50:5	C10	1.2	2.4	4.8	-	-	0.018	2.0	2.0
296 - 750	75:5	C10	0.6	1.2	2.4	4.8	-	0.027	2.0	2.0
296 - 101	100:5	C20	0.6	0.6	1.2	2.4	4.8	0.035	2.0	2.0
296 - 151	150:5	C20	0.3	0.3	0.6	1.2	2.4	0.053	2.0	2.0
296 - 201	200:5	C20	0.3	0.3	0.6	0.6	1.2	0.071	2.0	2.0
296 - 251	250:5	C50	0.3	0.3	0.3	0.3	0.6	0.121	2.0	2.0
296 - 301	300:5	C50	0.3	0.3	0.3	0.3	0.6	0.168	2.0	1.5
296 - 401	400:5	C100	0.3	0.3	0.3	0.3	0.3	0.224	2.0	1.5
296 - 501	500:5	C50	0.3	0.3	0.3	0.3	0.3	0.249	1.5	1.5
296 - 601	600:5	C100	0.3	0.3	0.3	0.3	0.3	0.298	1.5	1.33
296 - 751	750:5	C100	0.3	0.3	0.3	0.3	0.3	0.373	1.5	1.0
296 - 801	800:5	C100	0.3	0.3	0.3	0.3	0.3	0.398	1.5	1.0
296 - 102	1000:5	C100	0.3	0.3	0.3	0.3	0.3	0.447	1.33	1.0

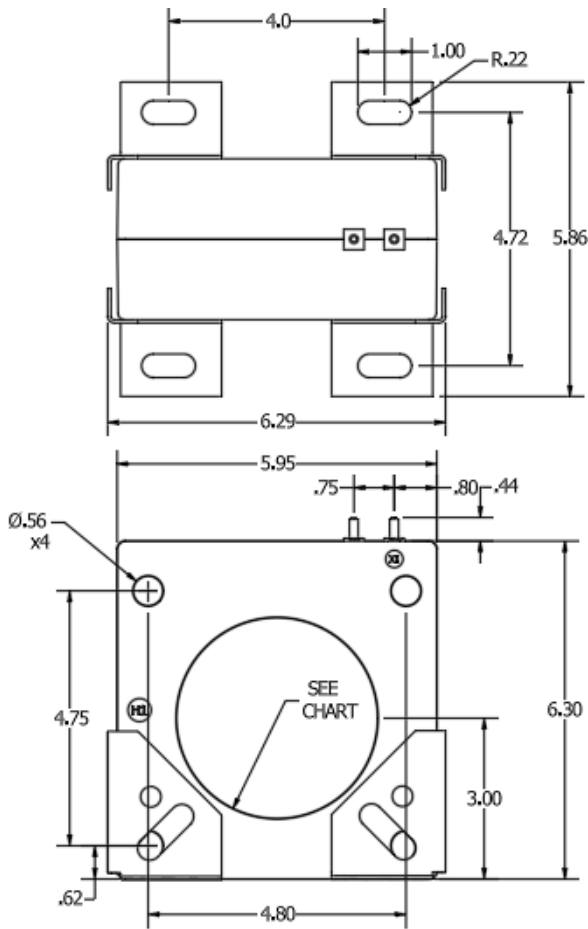


OPTIONAL FEET

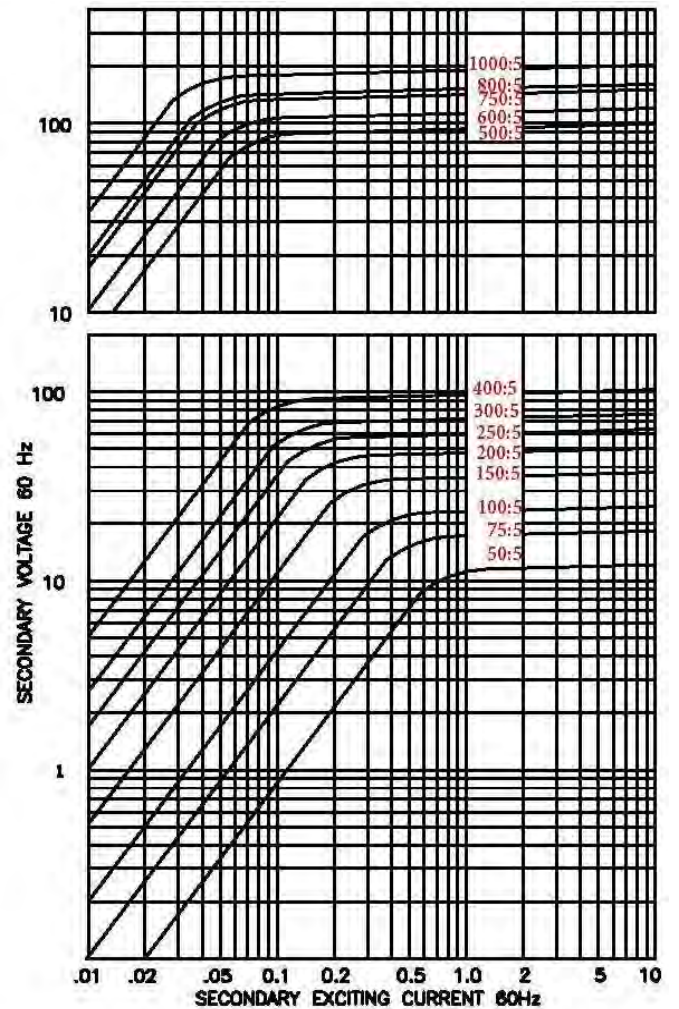
Products are manufactured in a plant whose quality management system has been certified to be in compliance with ISO 9001:2015 by NQA



### Model 296



### EXCITATION CURVE



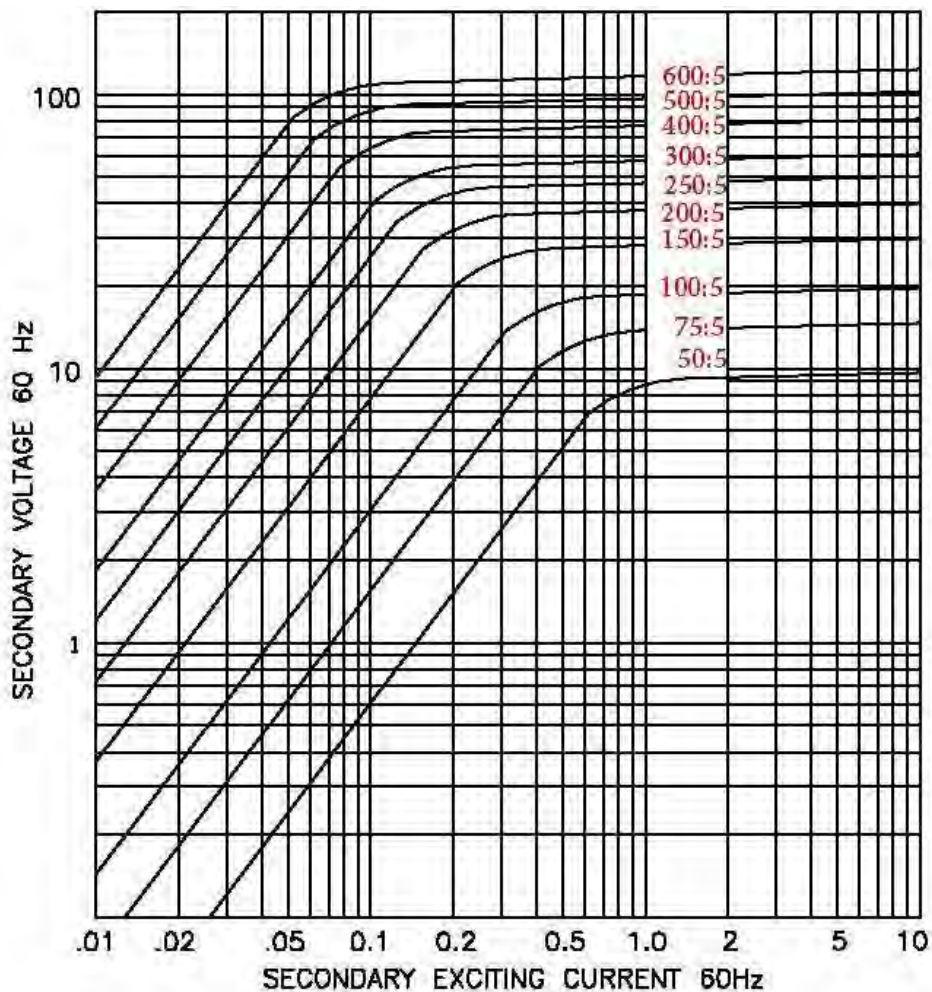
Model 296



**MODEL 297**  
Window Diameter 2.25"  
Approximate weight: 15 lbs.

CATALOG NUMBER	CURRENT RATIO	RELAY CLASS	ANSI METERING CLASS AT 60 HZ					SECONDARY WINDING RESISTANCE (OHMS @ 75°C)	CONTINUOUS THERMAL RATING FACTOR	
			B0.1	B0.2	B0.5	B0.9	B1.8		@ 30°C	@ 55°C
297 - 500	50:5	-	2.4	4.8	-	-	-	0.015	2.0	2.0
297 - 750	75:5	C10	1.2	2.4	4.8	4.8	-	0.023	2.0	2.0
297 - 101	100:5	C10	0.6	1.2	2.4	4.8	4.8	0.051	2.0	2.0
297 - 151	150:5	C20	0.6	0.6	1.2	2.4	2.4	0.048	2.0	2.0
297 - 201	200:5	C20	0.3	0.6	0.6	1.2	2.4	0.103	2.0	2.0
297 - 251	250:5	C20	0.3	0.3	0.3	0.6	1.2	0.111	2.0	2.0
297 - 301	300:5	C50	0.3	0.3	0.3	0.6	1.2	0.154	2.0	1.5
297 - 401	400:5	C50	0.3	0.3	0.3	0.3	0.6	0.205	2.0	1.5
297 - 501	500:5	C50	0.3	0.3	0.3	0.3	0.3	0.233	2.0	1.5
297 - 601	600:5	C100	0.3	0.3	0.3	0.3	0.3	0.308	1.5	1.33

### EXCITATION CURVE



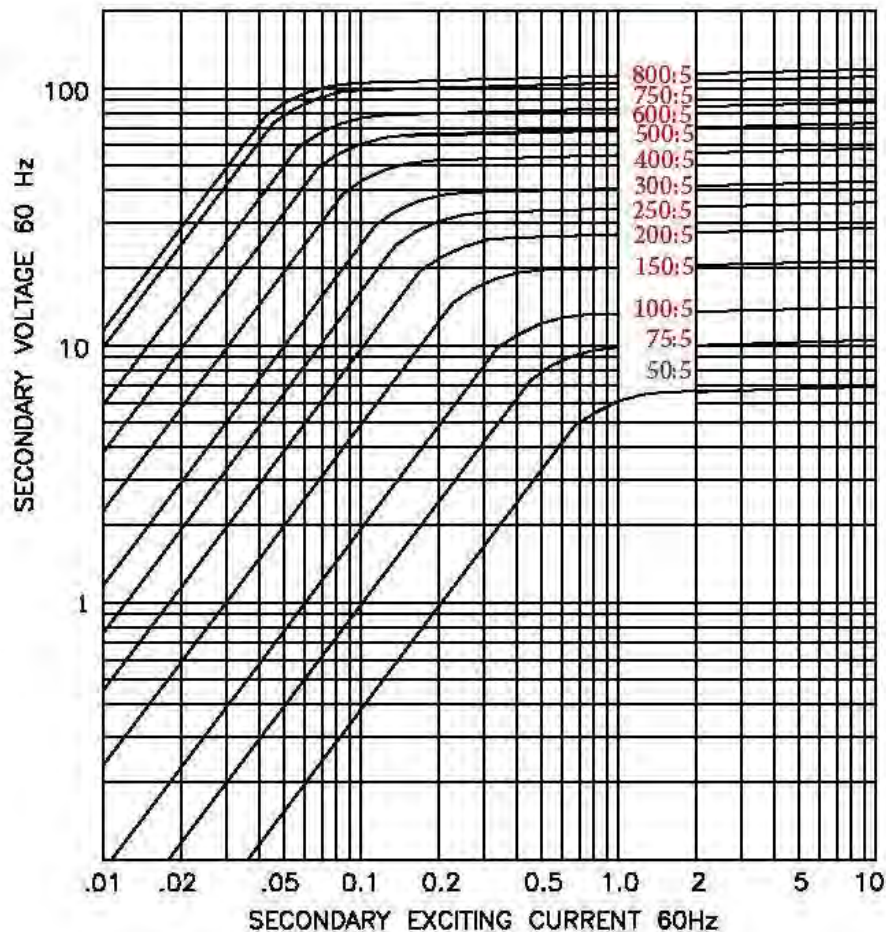
Model 297



**MODEL 298**  
Window Diameter 3.0"  
Approximate weight: 12 lbs.

CATALOG NUMBER	CURRENT RATIO	RELAY CLASS	ANSI METERING CLASS AT 60 HZ					SECONDARY WINDING RESISTANCE (OHMS @ 75°C)	CONTINUOUS THERMAL RATING FACTOR	
			B0.1	B0.2	B0.5	B0.9	B1.8		@ 30°C	@ 55°C
298 - 500	50:5	-	2.4	4.8	-	-	-	0.023	2.0	2.0
298 - 750	75:5	-	1.2	1.2	4.8	-	-	0.028	2.0	2.0
298 - 101	100:5	C10	0.6	0.6	2.4	4.8	-	0.040	2.0	2.0
298 - 151	150:5	C10	0.6	0.6	1.2	2.4	4.8	0.060	2.0	2.0
298 - 201	200:5	C20	0.6	0.6	0.6	1.2	2.4	0.080	2.0	2.0
298 - 251	250:5	C20	0.3	0.3	0.6	1.2	2.4	0.073	2.0	2.0
298 - 301	300:5	C20	0.3	0.3	0.6	0.6	1.2	0.087	2.0	2.0
298 - 401	400:5	C20	0.3	0.3	0.3	0.3	0.6	0.186	2.0	1.5
298 - 501	500:5	C50	0.3	0.3	0.3	0.3	0.6	0.233	2.0	1.5
298 - 601	600:5	C50	0.3	0.3	0.3	0.3	0.3	0.279	1.5	1.33
298 - 751	750:5	C50	0.3	0.3	0.3	0.3	0.3	0.349	1.5	1.0
298 - 801	800:5	C50	0.3	0.3	0.3	0.3	0.3	0.372	1.5	1.0

### EXCITATION CURVE



Model 298



# Current Transformer

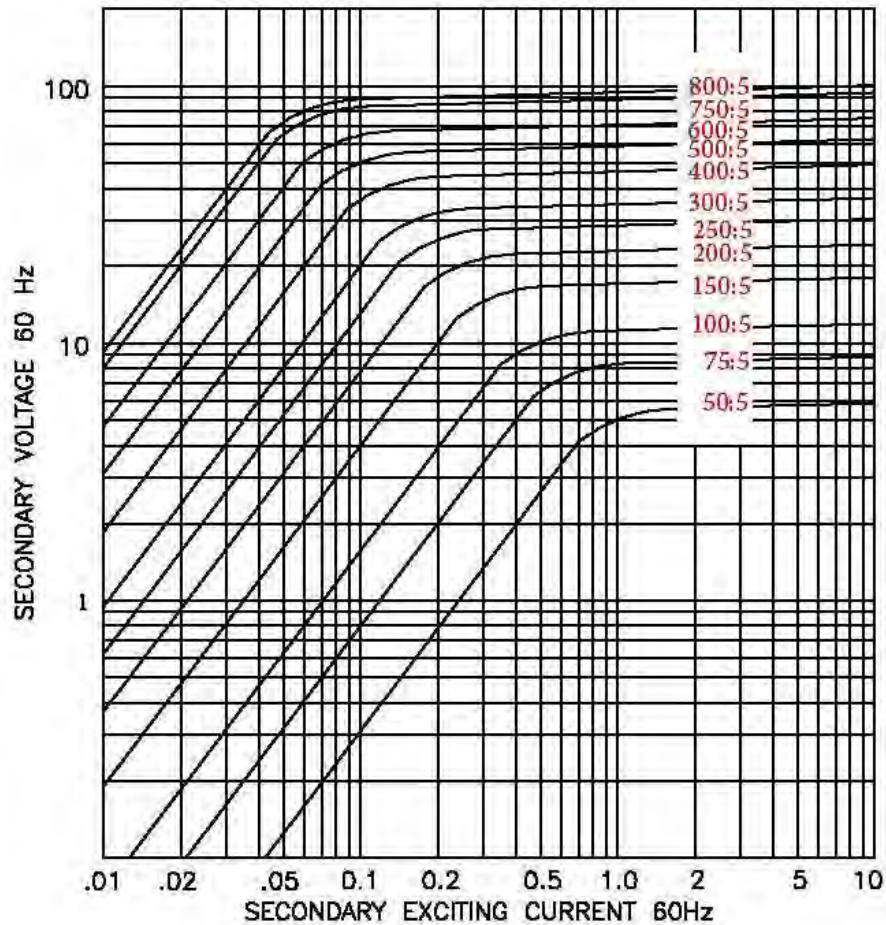
**Model 296-300**

rev 08122025

Model 299  
Window Diameter 3.38"  
Approximate weight: 10 lbs.

CATALOG NUMBER	CURRENT RATIO	RELAY CLASS	ANSI METERING CLASS AT 60 HZ					SECONDARY WINDING RESISTANCE (OHMS @ 75°C)	CONTINUOUS THERMAL RATING FACTOR	
			B0.1	B0.2	B0.5	B0.9	B1.8		@ 30°C	@ 55°C
299 - 500	50:5	-	4.8	4.8	-	-	-	0.022	2.0	2.0
299 - 750	75:5	-	1.2	2.4	4.8	-	-	0.028	2.0	2.0
299 - 101	100:5	C10	0.6	1.2	2.4	4.8	-	0.038	2.0	2.0
299 - 151	150:5	C10	0.6	0.6	1.2	2.4	4.8	0.057	2.0	2.0
299 - 201	200:5	C10	0.6	0.6	1.2	1.2	2.4	0.088	2.0	2.0
299 - 251	250:5	C20	0.3	0.3	0.6	1.2	2.4	0.098	2.0	2.0
299 - 301	300:5	C20	0.3	0.3	0.3	0.6	1.2	0.118	2.0	2.0
299 - 401	400:5	C20	0.3	0.3	0.3	0.6	0.6	0.177	2.0	1.5
299 - 501	500:5	C20	0.3	0.3	0.3	0.3	0.6	0.221	2.0	1.5
299 - 601	600:5	C50	0.3	0.3	0.3	0.3	0.3	0.265	1.5	1.33
299 - 751	750:5	C50	0.3	0.3	0.3	0.3	0.3	0.331	1.5	1.0
299 - 801	800:5	C50	0.3	0.3	0.3	0.3	0.3	0.353	1.5	1.0

## EXCITATION CURVE



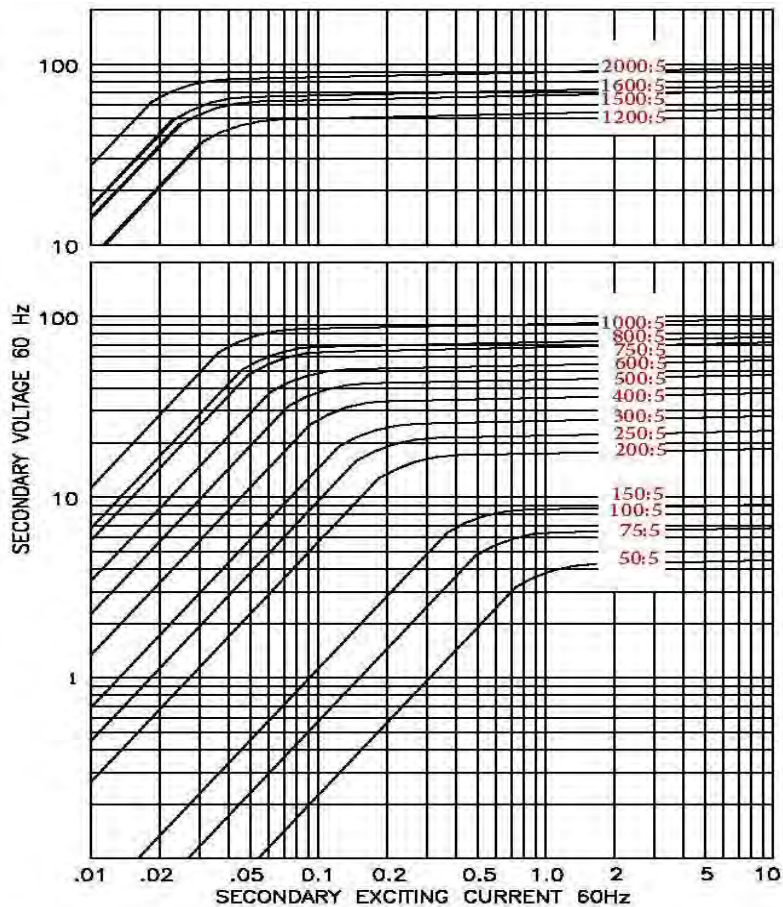
Model 299



Window Diameter 3.75"  
Approximate weight: 9 lbs.

CATALOG NUMBER	CURRENT RATIO	RELAY CLASS	ANSI METERING CLASS AT 60 HZ					SECONDARY WINDING RESISTANCE (OHMS @ 75°C)	CONTINUOUS THERMAL RATING FACTOR	
			B0.1	B0.2	B0.5	B0.9	B1.8		@ 30°C	@ 55°C
300 - 500	50:5	-	2.4	4.8	-	-	-	0.012	2.0	2.0
300 - 750	75:5	-	2.4	2.4	-	-	-	0.019	2.0	2.0
300 - 101	100:5	-	2.4	2.4	2.4	-	-	0.026	2.0	2.0
300 - 151	150:5	-	0.6	0.6	2.4	2.4	4.8	0.054	2.0	2.0
300 - 201	200:5	C10	0.6	0.6	1.2	2.4	4.8	0.072	2.0	2.0
300 - 251	250:5	C10	0.3	0.6	1.2	1.2	2.4	0.104	2.0	2.0
300 - 301	300:5	C10	0.3	0.3	0.3	0.6	1.2	0.108	2.0	2.0
300 - 401	400:5	C20	0.3	0.3	0.3	0.6	1.2	0.144	2.0	1.5
300 - 501	500:5	C20	0.3	0.3	0.3	0.6	0.6	0.209	2.0	1.5
300 - 601	600:5	C20	0.3	0.3	0.3	0.3	0.6	0.251	1.5	1.33
300 - 751	750:5	C20	0.3	0.3	0.3	0.3	0.3	0.329	1.5	1.0
300 - 801	800:5	C50	0.3	0.3	0.3	0.3	0.3	0.334	1.5	1.0
300 - 102	1000:5	C50	0.3	0.3	0.3	0.3	0.3	0.418	1.33	1.0
300 - 122	1200:5	C10	0.3	0.3	0.3	0.3	0.3	0.425	1.33	1.0
300 - 152	1500:5	C10	0.3	0.3	0.3	0.3	0.3	0.531	1.0	1.0
300 - 162	1600:5	C10	0.3	0.3	0.3	0.3	0.3	0.567	1.0	0.8
300 - 202	2000:5	C20	0.3	0.3	0.3	0.3	0.3	0.708	1.0	0.8

### EXCITATION CURVE



Model 300