



**Current Transformer
Technologies LTD**



3 Phase Voltage Transformer

Model 2VT460-600MR

rev 10032025

FREQUENCY:

60 Hz.

STANDARD SECONDARY VOLTAGE:

120 Volts Line-to-2X1

ACCURACY CLASS: (Per Phase)

± 1% at all burdens up to 2 VA

INSULATION LEVEL

600 Volts, 10 kV BIL. full wave

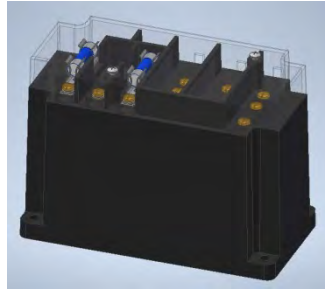
THERMAL RATING: (Per Phase)

25 VA at 30°C amb.

15 VA at 55°C. amb.

APPROXIMATE WEIGHT:

15.5 lbs.



CERTIFICATIONS:



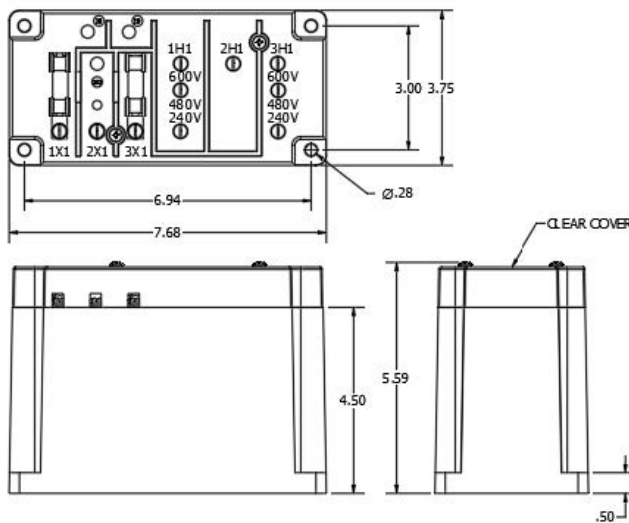
223647



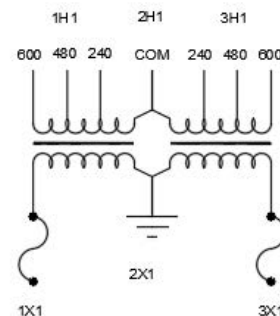
- The model 2VT460-600MR is an assembly of two Multi-tapped transformers in one case.
- The primary and secondary terminals are No. 6-32 screws and fitted with one lock washer and flat washer.
- The core and coil assembly are encased in a thermoplastic shell and filled with resin.

- Spacing between live parts per U.L. 1558.
- The transformer has three taps 600 "5 to 1", 480 "4 to 1", 240 "2 to 1" All to 120 vac
- The transformer has a clear plastic terminal cover.
- Taps are changed by moving three wires "see picture"
- A 0.40 amp fuse in recommend to protect the transformer

MODEL 2VT460-600MR		TAPS		
Catalog Number	Connections	240	480	600
2VT460-600MR	Screws	2 to 1	4 to 1	5 to 1
2VT460-600MR-FF	Secondary Fuses			
2VT460-600MR-CCC-X1	Secondary Clips Only			



CONNECTION DIAGRAM



- The core and coil assembly is encased in a thermoplastic shell and filled with resin.
- Transformers are designed for open delta connection.

Products are manufactured in a plant whose quality management system has been certified to be in compliance with ISO 9001:2015 by NQA